



SWEDISH INNOVATION, QUALITY & DESIGN

En

Granule Combi®



GRANULDISK®

Potwashing and
dishwashing in one

Granule Combi®

Granule Combi® incorporates the innovative Granule Technology™ and eliminates the need to pre-wash.

Granule Combi® is a pass through No Pre-Washing™ solution that can also take care of your dishwashing needs. Our unique Granule Combi model combines our award-winning efficient Granule technology for pots and pans

with traditional crockery and cutlery washing technology. Use Granule Combi for all washing up needs in smaller kitchens, or as a powerful pot wash solution with crockery and cutlery support in medium to large-sized kitchens.



Less chemicals

Saves on average 1.3 litres per day, adding up to 380 litres per year.



Less water

Saves on average 900 litres per day, adding up to 270,000 litres per year.



Less energy

Saves on average 35 kWh per day, adding up to 10,400 kWh per year.



Less time

Cleans your pots and pans in 2 min. 30 sec without pre-washing.



High capacity

6+1 GNI/1 or GNI/2 per cycle
- up to 147 GNI/1 or GNI/2 per hour (max. depth 65 mm)
Up to 33 crockery baskets per hour



Food safety

All wash programmes comply with the hygiene guidelines of the DIN 10512 standard



Future proof

Granule Combi is Industry 4.0 ready, meaning it will be compatible with future features and functions.



User-friendly design

Eye-level control panel.
Large buttons and clear symbols.
Reminders and messages on the display.
Automatic hood.
Patented basket sensor and automatic programme selection.
USB port for export of HACCP log files.



SIMpel™

QR code with online access to operator training videos, servicing history, and troubleshooting guides.



power
GRANULES BIO

Two ways to use Granule Combi®

Granule Combi® is available in two different editions, suited to two different areas of use: *All-In-One* and *Dishwashing Support*. Each edition comes with carefully selected standard accessories and can be further customised to your needs by adding one or more smart accessories.

N.B. Granule Combi is a pass through model and needs to be integrated into a tabling system.



17.6 kW
32 A

12.6 kW
25 A

Granule Combi® All-In-One Edition

Granule Combi All-in-One Edition - for 50/50 pot washing / dishwashing needs. Handles all your pot washing and dishwashing in one machine and replaces the need for a separate dishwasher.

This option suits operations that prepare and serve up to 300 hot meals per day and use between 2-2.5 hours washing up.

Granule Combi® Dishwashing Support Edition

Granule Combi Dishwashing Support Edition - mainly for pot washing and the occasional dishwash basket. This is your best option if you need an efficient and versatile pot wash solution.

This option suits operations that prepare up to 1,200 hot meals per day, with wash needs for GN containers and occasional dishwash baskets.

Tabling

Granule Combi is a pass through solution and needs to be installed with inlet and outlet tabling to function optimally.

Straight or corner - left, right and front.

Granule Combi can be installed either in a corner or straight configuration. Tabling can be connected on either the left, right or front of the machine.

Need extra surfaces or added flexibility?

Add a collapsible Folding Table or a mobile Trolley for Wash Basket from our accessories range. See next page.

Tabling is not sold by Granuldisk. For recommendations and guidelines regarding tabling for Granule Combi, please speak to your certified Granuldisk dealer.



Wash it live

Want to see Granule Combi® in action? Watch a video demo, or visit a Live Wash™ Book at www.granuldisk.com/livewash



Check out Granule Combi®

Watch our Youtube film to see how efficient and versatile the Granule Combi®-series are.



Accessories

Granule Combi® can be further customised to fit your unique needs by adding one or more smart accessories and inserts.



Follow us on YouTube to see how to load and use the different accessories.

Wash basket without bottom grid

Art no. 26426

Capacity: 6+1 GN 1/1 65 mm or 3 GN 1/1 up to 200 mm + 3 GN 1/1 up to 65 mm. Equipped with small hooks which enable up to 12 small containers (1/4, 1/6, 1/9) to be loaded directly into the wash basket.

(Included.)



Wash basket with bottom grid

Art no. 26140

For customers that washes items from the Gastronorm range, but also have a larger mix of other items. The bottom grid prevents handles etc. from slipping through the bottom of the basket.



Wash basket for plates and crockery

Art no. 19882

500 x 500 mm



Holder for bowls & pots with integrated ladle holder

Art no. 13756

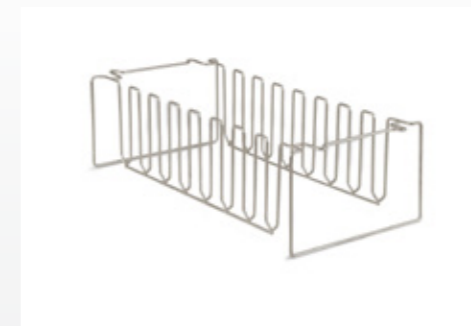
To be placed inside the round wash baskets. Capacity: up to 5-6 bowls or pots. Height of ladles max. 500 mm.



Insert for trays, grids, lids, cutting boards etc

Art no. 19992

To be placed inside the round wash baskets. Holds 2 GN 2/1 or 6 baking trays 600 x 400 mm up to 20 mm edge and 2 GN 1/1 sized trays, up to 16 grids, up to 8 chopping boards and GN 1/1 lids.



Multiflex holder for saucepans, small bowls, sieves

Art no. 20554

To be placed inside the round wash baskets. Capacity: up to 3-4 saucepans or up to 4-5 small bowls, sieves etc.



Pot basket

Art no. 21423

Holds 2 large pots (200 mm) or 1 large pot (400 mm). Placed in machine instead of Standard wash basket.



Flexible pot holder

Art no. 25188

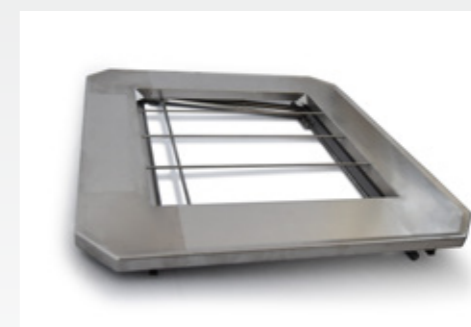
Rubber strap with two hooks. Rubber strap to be placed around pot and hooked onto the basket.



Folding table

Art no. 19570

Can be installed on front or on either side. 780 x 780 mm.



Granule Combi® technical data

General.

Design	Hood-type pot washer with support for crockery and cutlery. Pass through model with rotating basket.
Outer dimensions (H x W x D)	1693/2339 mm (± 25) x 850 mm x 1 002 mm
Loading volume	220 litres (Ø 700 x H 570 mm)
Weight (filled / empty)	416 kg / 317 kg
Wash tank volume	83 litres
Rinse water volume	4 litres (ECO programme) 8 litres (Short / Normal programme) <i>To achieve 3,600 HUE in accordance with NSF/ANSI 3, 8 litres is necessary.</i>
Rinse water volume (Combi mode)	4 litres / programme
Granule volume	8 litres
Wash water temperature	65 °C
Rinse water temperature	85 °C
Sound pressure level	< 70 dB (A)

Programmes & capacity.

Wash programmes with / without Granules	ECO: 2 min, 30 sec / 2 min, 30 sec Short: 3 min, 40 sec / 2 min, 50 sec Normal: 5 min, 40 sec / 4 min, 50 sec
Wash programmes (Combi mode)	ECO: 1 min, 30 sec Short: 2 min Normal: 2 min, 30 sec
Max. / normal capacity per hour (normal capacity incl. handling)	147 / 119 GNI/l or similar in other pots.
Capacity per programme	6+1 GNI/l or 1/2 65 mm, or 3 GNI/l or 1/2 up to 200 mm depth and 3 GNI 1/1 or 1/2 up to 65 mm depth, or similar in other pots.
Max. / normal capacity Combi mode (500 x 500 mm dishwash basket)	40 baskets / 33 baskets (All-in-One Edition 32A) 30 baskets / 26 baskets (Dishwashing Support Edition 25A)

Electrical connection.

Available voltage	3 ~ 400-415 V/50 Hz + PE (hot fill, 12.6 kW, 25A) (DWS**) 3 ~ 400-415 V/50 Hz + PE (hot fill, 17.6 kW, 32A) (AIO**) 3 ~ 230 V/50 Hz + PE (hot fill, 12.6 kW, 40A) (DWS**)
Fuses (at max output 12.6 kW)	25A (400,415V)/40A (230V)
Fuses (at max output 17.6 kW)	32A (400,415V)
Max output	12.6 kW (25A) / 17.6 kW (32A)
Wash pump motor	2.6 kW
Wash pump motor (Combi mode)	0.7 kW
Rinse pump motor	0.37 kW
Heater wash tank*	9 kW (25A) 14 kW (32A)
Heater rinse tank*	9 kW (25A) 14 kW (32A)
Enclosure rating	IPX5

Water connection.

Hardness / Connection	Total hardness: 3-7 °dH, 5-12 °TH, 53-125 PPM / ¾" BSP male (DN20) <i>Note: Reverse osmosis/distilled water must not be used.</i>
Connection A	12.6/17.6 kW unit: 1-6 bar, 15 l/min, 55-65 °C
Connection B	12.6/17.6 kW unit: 1-6 bar, 15 l/min, <20 °C 12.6/17.6 kW with steam reduction (option): 3-6 bar, 15 l/min, <20 °C

Drain & ventilation.

Ventilation with steam reduction	150 m³/h
Ventilation without steam reduction	400 m³/h
Heat emitted to room with steam reduction (total/sensible/latent)	1.2 kW / 0.4 kW / 0.8 kW
Heat emitted to room without steam reduction (total/sensible/latent)	1.6 kW / 0.4 kW / 1.2 kW
Drainage pipe	Pipe ø 32 mm
Drain	Capacity requirement 50 l/min. No drain pump, gravity drain. <i>The machine must not be placed directly over a drain.</i>
Detergent and rinse aid	Required. 230 VAC signal is available from a separate box. Max. load total 0.5 A.

Always SIMpel™

All Granuldisk solutions are equipped with SIMpel™ - a smart QR code system with a dedicated online platform. Whether you are an end-user or a service technician, SIMpel™ gives you quick and easy access to unique material for your specific product.

The QR code is the gateway between your product and your SIMpel portal. Simply scan the code to be automatically directed to the online portal containing machine-specific documents, troubleshooting guides, error code look-up tables, and how-to videos. As a service technician you will be able to enter the password-protected technician area to log or look up documentation and maintenance history.



Tabling

Granule Combi® is a pass through solution and needs to be installed with inlet and outlet tabling to function optimally.

Talk to your Granuldisk sales representative or your preferred Certified Granuldisk Sales Partner for more information.



Dosing equipment

Liquid detergent and rinse aid dosing dispenser with peristaltic pump and detergent dosing sensor is available as an optional factory fitted add-on.



Steam reduction

With the add-on steam reduction to your Granule Combi® you ensure a more pleasant working environment for staff and lower the ventilation requirements. Adds 30 seconds to the total time of Short and Normal wash programs. For Combi mode the addition is 20 seconds.

* Never operate simultaneously.

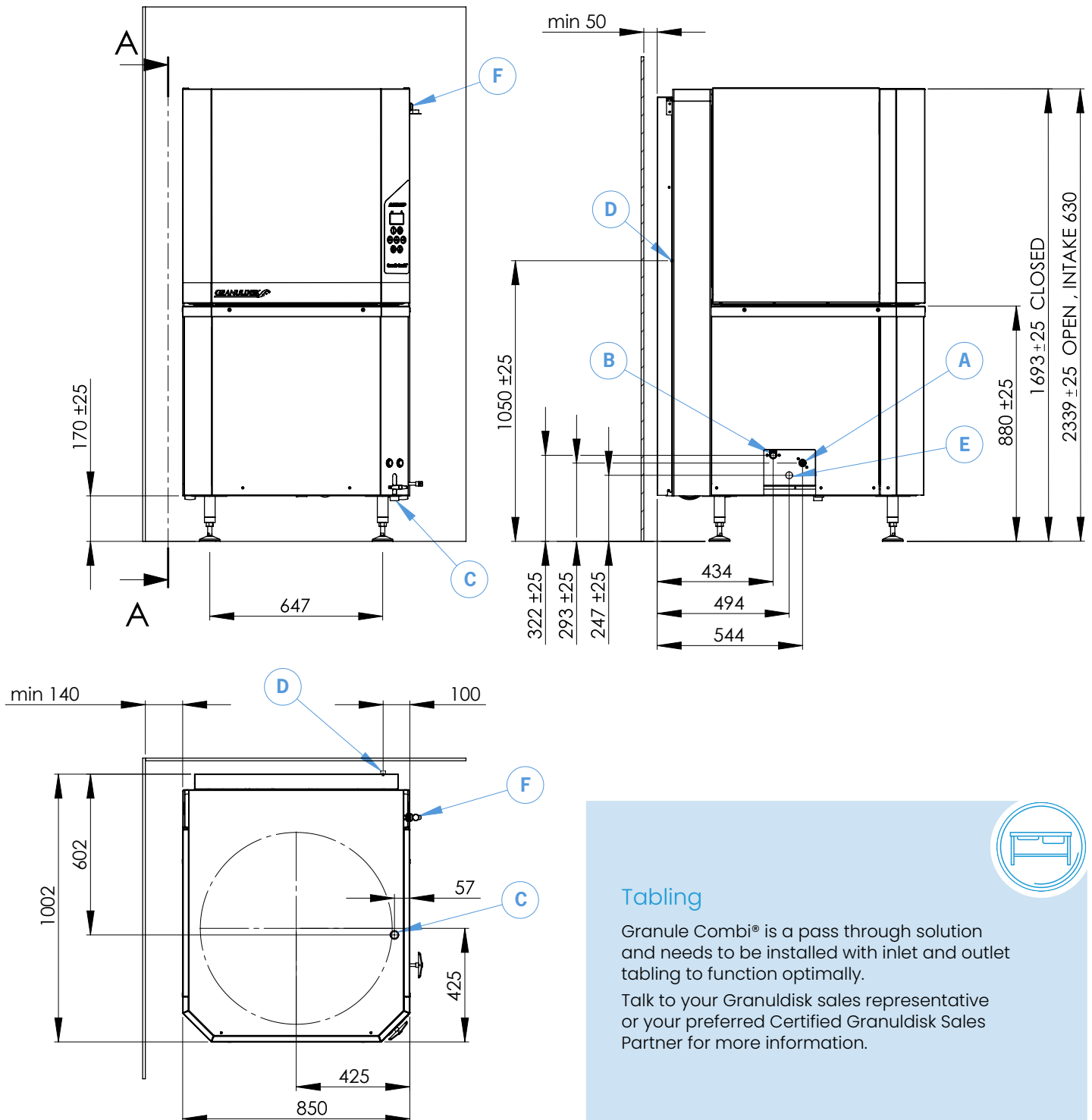
** AIO / DWS - Granule Combi® is available as All-in-One Edition (AIO) and Dishwashing Support Edition (DWS) and have different water and electrical requirements. Talk to your Granuldisk sales representative or preferred Certified Granuldisk Sales Partner for help and advice.

Granule Combi® is supplied with a 2-metre-long power cable (without plug) for connection to an approved mains switch. The mains switch is not included in the delivery.

Granule Combi® Installation

(A/B) Water inlet. (C) Drain. (D) Detergent/drying agent connection. (E) Electrical connection. (F) USB port.

See previous page for details.



Tabling

Granule Combi® is a pass through solution and needs to be installed with inlet and outlet tabling to function optimally.

Talk to your Granuldisk sales representative or your preferred Certified Granuldisk Sales Partner for more information.



(mm)